

INSTALLATION INSTRUCTIONS & PARTS LIST

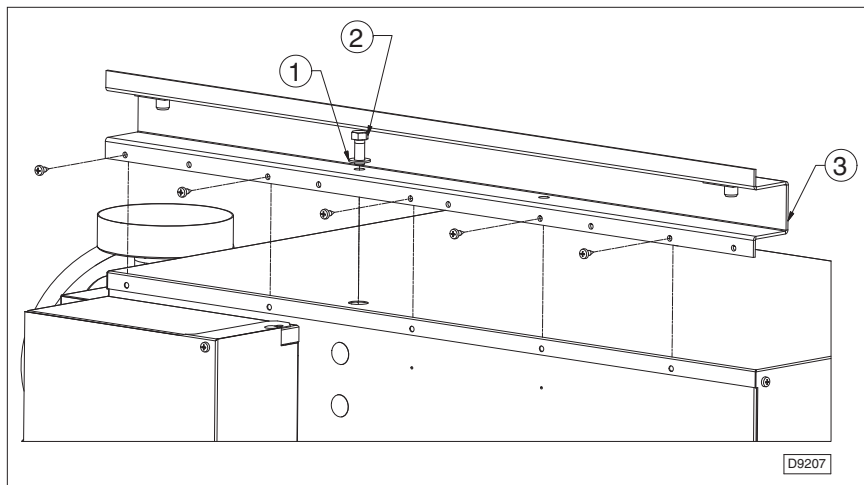
TWO TO FOUR-POINT SUSPENSION KIT

ADAPTS TWO-POINT TO FOUR-POINT BALANCED SUSPENSION
FOR TUBULAR PROPELLER UNIT HEATERS WITH CAPACITIES 100,000 TO 400,000 BTU/HR

KIT CONTENTS: (See Figure 1)

1. (2) Washer, plain
2. (2) Bolt, 3/8-16x1"
3. (2) Bracket, 12 gauge

FIGURE 1



- A. **PRIOR TO INSTALLATION:** Prior to adapting any existing two-point suspension, determine that it is secure by inspecting the existing heater mounting, wood joists, I-beams, bolts, washers, and clamps.
- B. **CLEARANCE:** Every gas appliance shall be located with respect to the building construction and other equipment so as to permit access to the appliance. Clearance between the vertical walls and vertical sides of the appliance shall be no less than 18 inches. Minimum clearance between top of the appliance and the ceiling is 6 inches. Minimum clearance from combustibles to the bottom of the unit is 12 inches. The minimum clearance from combustibles to the flue collector is 6 inches. Adequate clearances must be maintained around air openings into the combustion chamber.
- C. **HEATER MOUNTING:**

FIGURE 2 – STEEL CONSTRUCTION*

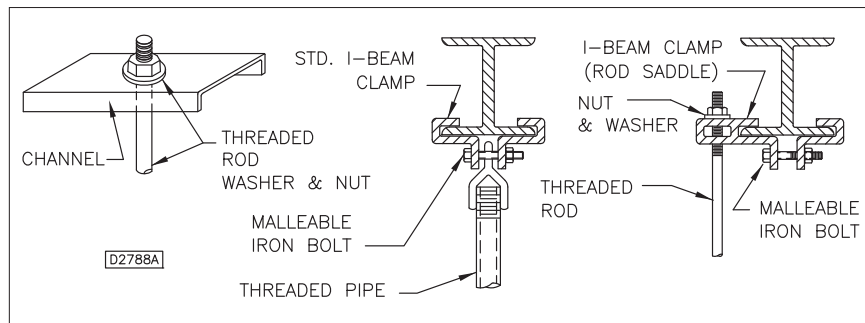
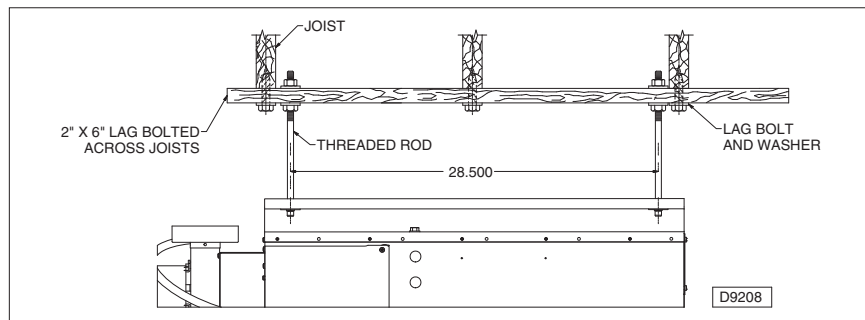


FIGURE 3 – WOOD CONSTRUCTION JOISTS*



* ALL HANGING HARDWARE & WOOD BY OTHERS



260 NORTH ELM ST., WESTFIELD, MA 01085
TEL: (413) 568-9571 FAX: (413) 562-8437
www.mestek.com